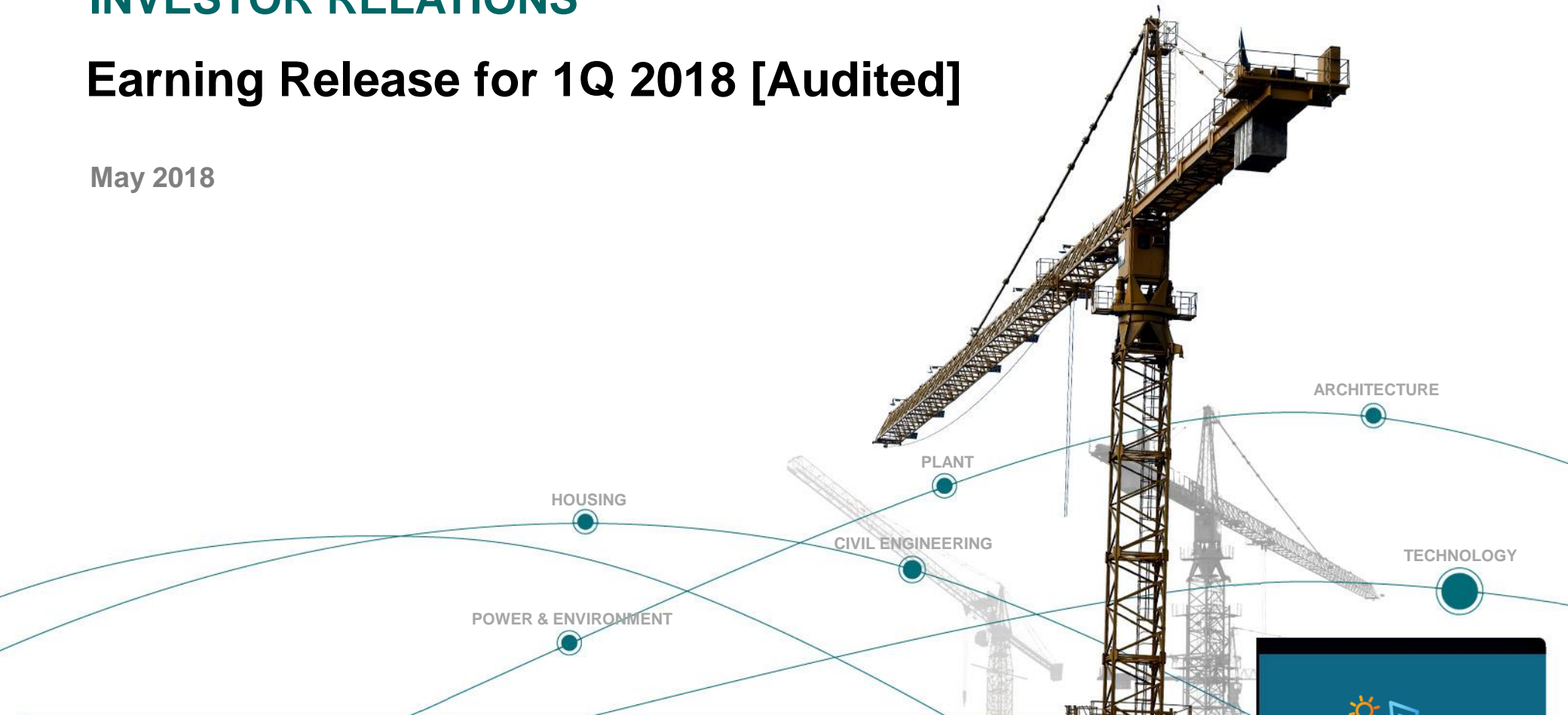


INVESTOR RELATIONS

Earning Release for 1Q 2018 [Audited]

May 2018



www.gsenc.com



This material contains forward-looking statements that include our current beliefs and expectations on market factors and information obtained outside GS E&C, which are subject to uncertainties. Due to the volatility of these factors, actual results may differ from those set forth in the presented statements. Information found here should not be solely relied upon for making any investment decision, this material is provided as a reference purpose only for the investors. GS E&C shall not be responsible for any trading or investment decisions made based on this information.

CONTENTS

- 01 _ Summary**
- 02 _ New Orders**
- 03 _ Order Backlogs**
- 04 _ Sales Revenues & Profits**
- 05 _ Financial Status [BS & IS]**

Summary



(Unit : KRW bn)

	1Q17	4Q17	1Q18	1Q17:1Q18	4Q17:1Q18
New Orders	1,942	2,725	1,972	1.5%	-27.6%
Sales	2,701	3,164	3,127	15.8%	-1.2%
Gross Profit (%)	157 (5.8%)	211 (6.7%)	504 (16.1%)	221.0%	138.9%
Operating Profit (%)	59 (2.2%)	103 (3.3%)	390 (12.5%)	561.0%	278.6%
Profit before tax (%)	-78 (-2.9%)	-97 (-3.1%)	311 (9.9%)	Converted to Surplus	Converted to Surplus



(Unit : KRW bn)

Division	1Q18(E)	18Y(P)
Domestic	1,698	8,394
Overseas	274	3,056
Infra	220 (* -)	
Plant	304 (*181)	
Power	10 (*10)	
Building	279 (*83)	
Housing	1,159 (* -)	
Total	1,972	11,450



(Unit : KRW bn)

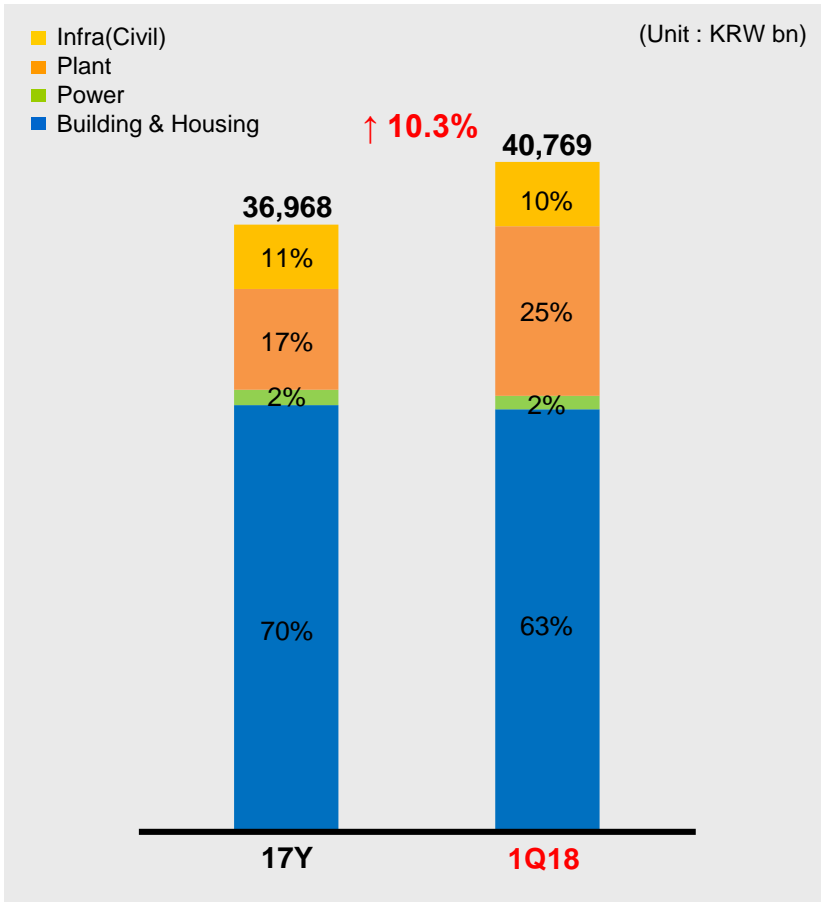
Division	Major New Projects
Infra	- Coal Terminal Construction on Donghae port (53) - Oksan-Ochang Highway O&M (43)
Plant	- Guangdong D-Project Environmental Facility (60) - MFC FEED Project (15)
Power	- Guangdong CA-Project 220kV Substation (10)
Building & Housing	- Gaepo The H-Xi (846) - LG Electronics Russia Ludza Expansion (16)

* Overseas

Order Backlogs



Order Backlogs

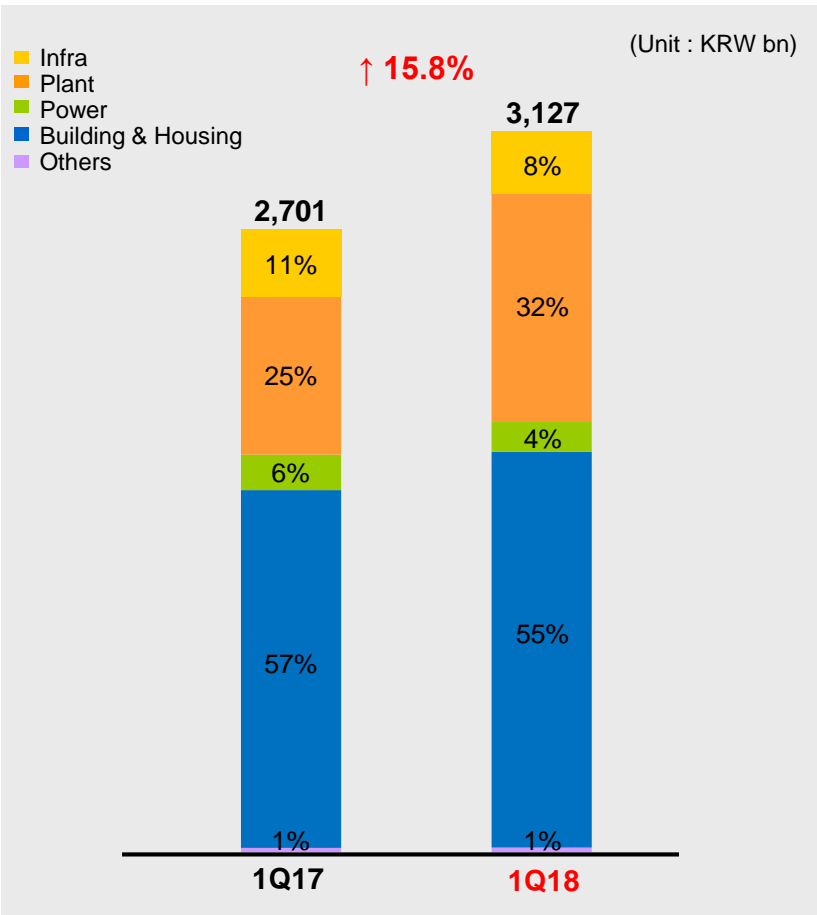


Order Backlogs by Division

(Unit : KRW bn)

Division	17Y	1Q18	Changes
Infrastructure	3,923	3,911	-0.3%
Plant	6,123	10,303*	68.3%
Power	938	818	-12.8%
Building & Housing	25,984	25,737	-1.0%
Domestic	29,688	29,665	-0.1%
Overseas	7,280	11,104*	52.5%
Total	36,968	40,769	10.3%

*GS Inima Environment S.A's backlog is included. (Approx. 4.7 tn as of 1Q18)

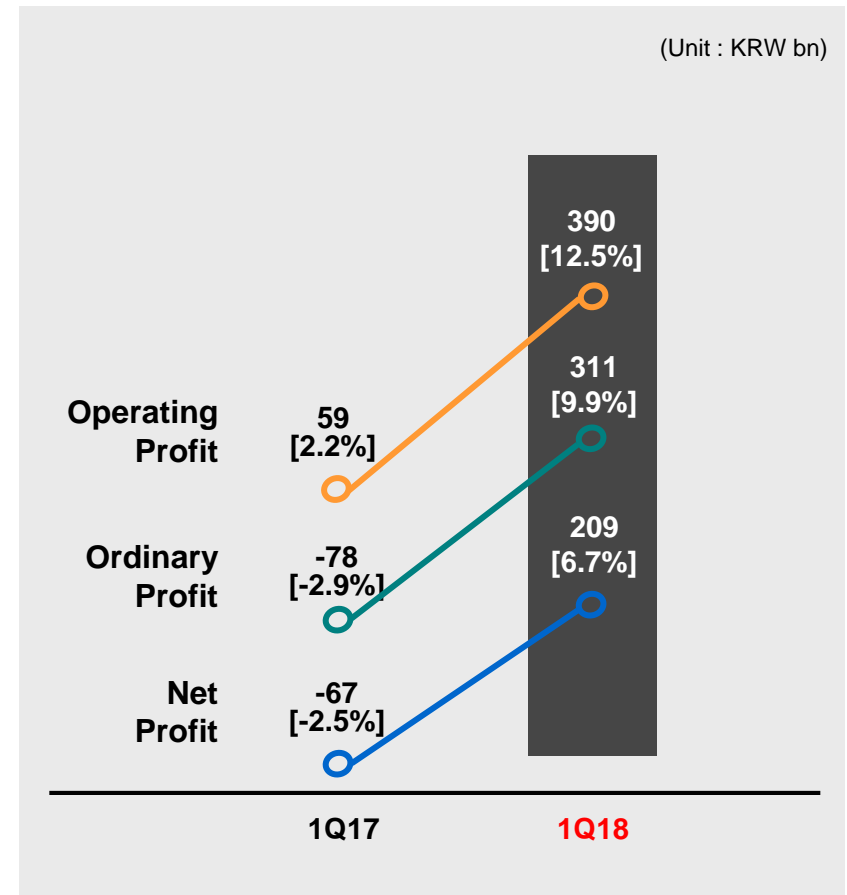
SalesSales by Division

(Unit : KRW bn)

Division	1Q17	1Q18	YoY
Infra	292	270	-7.5%
Plant	684	991	44.9%
Power	155	129	-16.8%
Building & Housing	1,550	1,716	10.7%
Others	20	21	5.0%
Domestic	1,870	1,839	-1.7%
Overseas	831	1,288	55.0%
Total	2,701	3,127	15.8%

Gross Profit Margin

Division	1Q17	1Q18
Infra	6.5%	7.6%
Plant	-23.2%	20.3%
Power	-6.1%	6.3%
Building & Housing	19.6%	15.9%
Others	9.9%	8.4%
Domestic	17.1%	15.0%
Overseas	-19.5%	17.7%
Total	5.8%	16.1%

Profit [Margin rate]

Financial Status – Statement of Financial Position (Summary)



(Unit : KRW bn, %)

Account	15Y	16Y	17Y	1Q18
Total Assets	13,005	13,377	13,697	12,314
Cash and cash equivalents	2,429	2,356	2,442	1,729
Trade and other receivable	4,749	4,997	4,763	4,251
Inventories	796	825	1,091	1,085
Short-Term financial instrument and other current assets	1,577	1,558	1,286	983
Tangible Assets	1,339	978	897	889
Total Liabilities	9,657	10,023	10,457	9,268
Trade and other payables	2,067	2,388	2,474	2,522
Borrowings	3,462	3,433	3,905	2,792
Total Equity	3,348	3,354	3,240	3,046
Capital Stock	355	355	358	358
Liability/Equity	288.5	298.9	322.8	304.3

Financial Status – Statement of Income (Summary)



(Unit : KRW bn)

Account		15Y	16Y	17Y	1Q18
Sales	Infra	1,266	1,383	1,298	270
	Plant	4,907	4,108	2,926	991
	Power	911	663	728	129
	Building & Housing	3,311	4,814	6,646	1,716
	Others	178	68	81	21
Total		10,573	11,036	11,679	3,127
Gross Profit		548	488	803	504
Selling & Administrative Expenses		426	345	485	114
Operating Profit		122	143	319	390
Profit before tax		31	21	(161)	311
Net Profit		29	(20)	(164)	209



www.gsenc.com

